

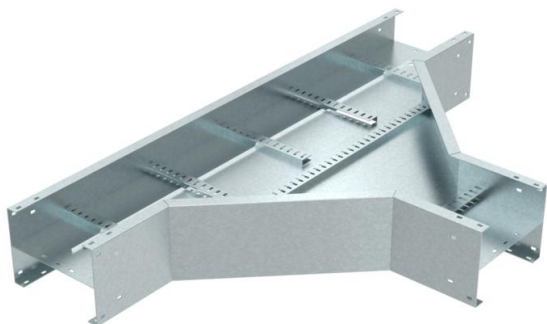
Technical data sheet

T branch piece TS225

Item number: 6906301



T-branch piece for all TS225 cable ladder types of 225 mm side height.
Accessory radius = 450 mm.



St Steel

FT Hot-dip galvanised

Master data

Item number	6906301
Type	TS225 600 HDG
Description 1	Tee R=450mm
Description 2	cable ladder TS225
Manufacturer	O-line
Dimension	1952x1276x22
Material	Steel
Surface	Hot-dip galvanised
Surface standard	DIN EN ISO 1461
Smallest sales unit	1
Unit of quantity	Piece
Weight	6412 kg
Weight unit	kg/100 pc.

Dimensions

 Width	600 mm
Height	225 mm

Technical data

Rail thickness	2.5 mm
----------------	--------