

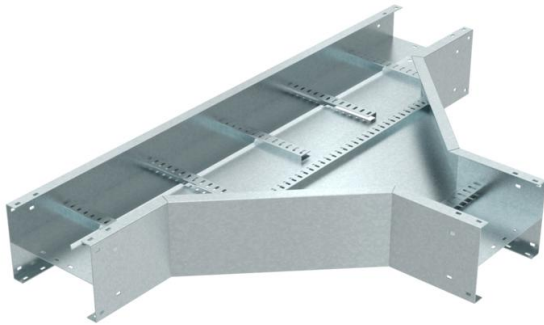
Technical data sheet

T branch piece TS225

Item number: 6906297



T-branch piece for all TS225 cable ladder types of 225 mm side height.
Accessory radius = 450 mm.



St	Steel
FT	Hot-dip galvanised

Master data

Item number	6906297
Type	TS225 450 HDG
Description 1	Tee R=450mm
Description 2	cable ladder TS225
Manufacturer	O-line
Dimension	1802x1126x22
Material	Steel
Surface	Hot-dip galvanised
Surface standard	DIN EN ISO 1461
Smallest sales unit	1
Unit of quantity	Piece
Weight	5301 kg
Weight unit	kg/100 pc.

Dimensions

	Width	450 mm
	Height	225 mm

Technical data

	Rail thickness	2.5 mm
--	----------------	--------