

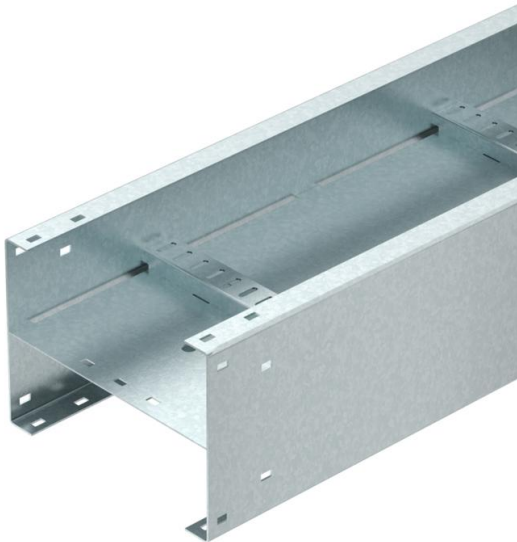
# Technical data sheet

## Cable ladder TS225, 3 m

Item number: 6906207



Double-sided TS225 cable ladder system, welded version, with closed base. The side height is 225 mm with a supply length of 3,000 mm.



- St** Steel
- FT** Hot-dip galvanised

### Master data

Item number	6906207
Type	TS225 450 HDG
Description 1	Cable ladder
Description 2	Twinspan TS225
Manufacturer	O-line
Dimension	3000x450x225
Material	Steel
Surface	Hot-dip galvanised
Surface standard	DIN EN ISO 1461
Smallest sales unit	3
Unit of quantity	Metre
Weight	2172.67 kg
Weight unit	kg/100 m

### Dimensions

Length	3,000 mm
Length	3,000 ft
Width	450 mm
Height	225 mm
Dimension B	450 mm

# Technical data sheet

Cable ladder TS225, 3 m

Item number: 6906207



## Technical data

Rung distance	300 mm
Rail thickness	2.5 mm