

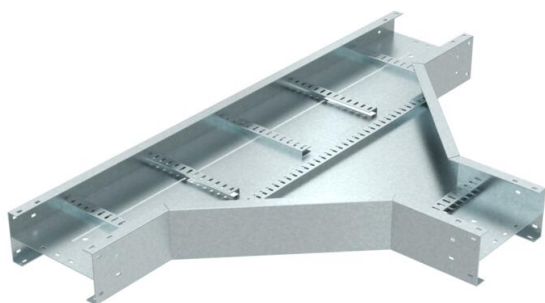
Technical data sheet

TS 150 T branch piece

Item number: 6906105



T-branch piece for all TS150 cable ladder types of 150 mm side height.
Accessory radius = 450 mm.



St Steel

FT Hot-dip galvanised

Master data

Item number	6906105
Type	TS150 900 HDG
Description 1	Tee R=450mm
Description 2	cable ladder TS150
Manufacturer	O-line
Dimension	2252x1576x15
Material	Steel
Surface	Hot-dip galvanised
Surface standard	DIN EN ISO 1461
Smallest sales unit	1
Unit of quantity	Piece
Weight	8340 kg
Weight unit	kg/100 pc.

Dimensions

	Width	900 mm
	Height	150 mm

Technical data

	Rail thickness	2.5 mm
--	----------------	--------