

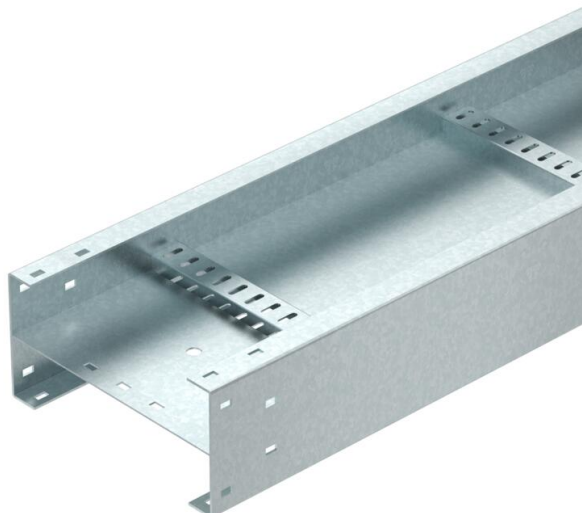
Technical data sheet

Cable ladder TS150, 3 m

Item number: 6906011



Double-sided TS150 cable ladder system, welded version, with closed base. The side height is 150 mm with a supply length of 3,000 mm.



St Steel

FT Hot-dip galvanised

Master data

Item number	6906011
Type	TS150 600 HDG
Description 1	Cable ladder
Description 2	Twinspan TS150
Manufacturer	O-line
Dimension	3000x600x150
Material	Steel
Surface	Hot-dip galvanised
Surface standard	DIN EN ISO 1461
Smallest sales unit	3
Unit of quantity	Metre
Weight	2180.34 kg
Weight unit	kg/100 m

Dimensions

Length	3,000 mm
Length	3,000 ft
Width	600 mm
Height	150 mm
Dimension B	600 mm

Technical data sheet

Cable ladder TS150, 3 m

Item number: 6906011



Technical data

Rung distance	300 mm
Rail thickness	2.5 mm