

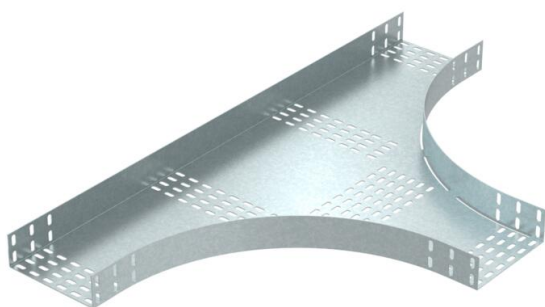
# Technical data sheet

## T branch piece PT76 FT

Item number: 6900773



T branch piece, horizontal, for the cable tray types PT76.  
Accessory radius = 450 mm. Accessory radius for 650 mm and 1000 mm available on request.








**St** Steel

**FT** Hot-dip galvanised

### Master data

Item number	6900773
Type	PT76 457 HDG
Description 1	T-branch piece R=450
Description 2	cable tray, heavy-duty
Manufacturer	O-line
Dimension	1530x995x76
Material	Steel
Surface	Hot-dip galvanised
Surface standard	DIN EN ISO 1461
Smallest sales unit	1
Unit of quantity	Piece
Weight	2084 kg
Weight unit	kg/100 pc.

### Dimensions

	Width	457 mm
	Height	76 mm
	Plate thickness	2 mm
	Dimension A	2 mm
	Dimension B	457 mm

# Technical data sheet

T branch piece PT76 FT

Item number: 6900773



## Technical data

Type of connector, cable support system	Screwed
---	---------