

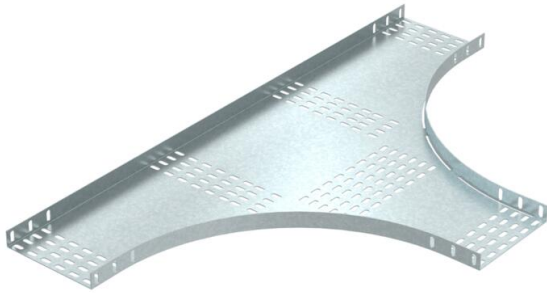
# Technical data sheet

## T branch piece PT38 FT

Item number: 6900463



T branch piece, horizontal, for the cable tray types PT38.  
Accessory radius = 450 mm. Accessory radius for 650 mm and 1000 mm available on request.



<b>St</b>	Steel
<b>FT</b>	Hot-dip galvanised

### Master data

Item number	6900463
Type	PT38 76 HDG
Description 1	T-branch piece R=450
Description 2	cable tray, medium-duty
Manufacturer	O-line
Dimension	1150x640x38
Material	Steel
Surface	Hot-dip galvanised
Surface standard	DIN EN ISO 1461
Smallest sales unit	1
Unit of quantity	Piece
Weight	414 kg
Weight unit	kg/100 pc.

### Dimensions



Width	76 mm
Height	38 mm
Plate thickness	1.6 mm
Dimension A	1.6 mm
Dimension B	76 mm

# Technical data sheet

T branch piece PT38 FT

Item number: 6900463



## Technical data

Type of connector, cable support system	Screwed
---	---------