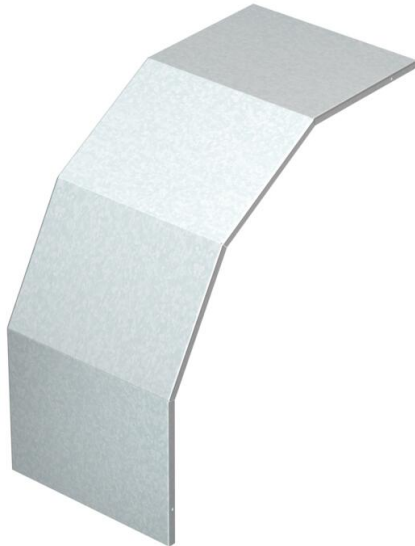


# Technical data sheet

Lid, 90° vertical bend, falling, PS

Item number: 6904461



Cover, 90° vertical bend, falling, for PS cable ladder system.  
Accessory radius = 450 mm. Accessory radius for 650 mm and 1000 mm available on request.



- St** Steel
- FT** Hot-dip galvanised

## Master data

Item number	6904461
Type	PSCover 300 HDG
Description 1	Cover vertical bend falling
Description 2	for cable ladder PS
Manufacturer	O-line
Dimension	650x650x343
Material	Steel
Surface	Hot-dip galvanised
Surface standard	DIN EN ISO 1461
Smallest sales unit	1
Unit of quantity	Piece
Weight	698 kg
Weight unit	kg/100 pc.

## Dimensions

	Width	300 mm
	Plate thickness	1.6 mm