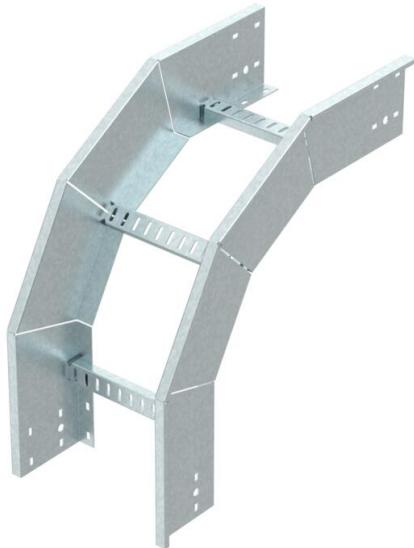


Technical data sheet

90° vertical bend, falling, PS150 FT

Item number: 6904157



90° vertical bend, falling, for all PS150 cable ladder types of 150 mm side height. Accessory radius = 450 mm. Accessory radius for 650 mm and 1000 mm available on request.



- St** Steel
- FT** Hot-dip galvanised

Master data

| | |
|---------------------|--------------------------------|
| Item number | 6904157 |
| Type | PS150 200 HDG |
| Description 1 | Vertical bend 90° falling |
| Description 2 | cable ladder, heavy-duty PS150 |
| Manufacturer | O-line |
| Dimension | 728x728x240 |
| Material | Steel |
| Surface | Hot-dip galvanised |
| Surface standard | DIN EN ISO 1461 |
| Smallest sales unit | 1 |
| Unit of quantity | Piece |
| Weight | 810 kg |
| Weight unit | kg/100 pc. |

Dimensions

| | |
|---|--------|
|  Width | 200 mm |
| Height | 150 mm |

Technical data

| | |
|----------------|------|
| Rail thickness | 2 mm |
|----------------|------|