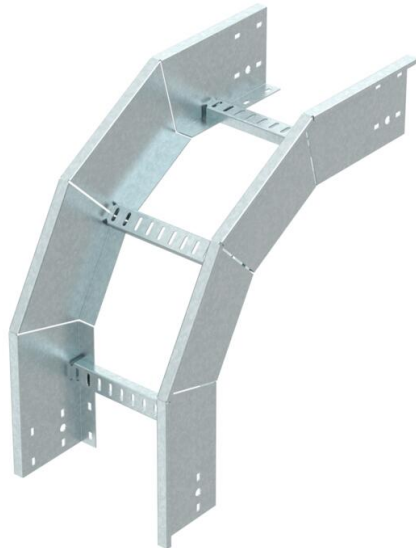


# Technical data sheet

90° vertical bend, falling, PS150 FT

Item number: 6904153



90° vertical bend, falling, for all PS150 cable ladder types of 150 mm side height. Accessory radius = 450 mm. Accessory radius for 650 mm and 1000 mm available on request.



<b>St</b>	Steel
<b>FT</b>	Hot-dip galvanised

## Master data

Item number	6904153
Type	PS150 150 HDG
Description 1	Vertical bend 90° falling
Description 2	cable ladder, heavy-duty PS150
Manufacturer	O-line
Dimension	728x728x190
Material	Steel
Surface	Hot-dip galvanised
Surface standard	DIN EN ISO 1461
Smallest sales unit	1
Unit of quantity	Piece
Weight	790 kg
Weight unit	kg/100 pc.

## Dimensions

	Width	150 mm
	Height	150 mm

## Technical data

Rail thickness	2 mm
----------------	------