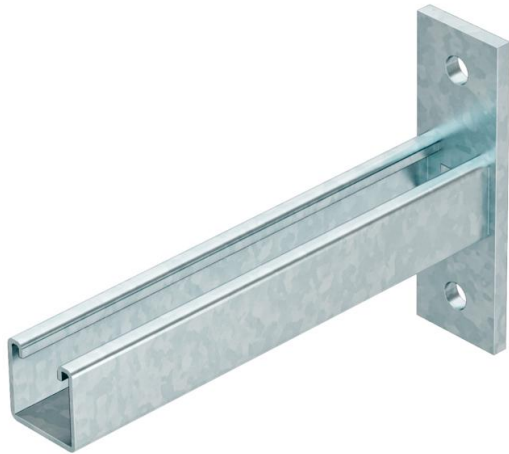


Technical data sheet

Single wall and support bracket OL254

Item number: 6910011



OL254 single cantilever bracket. Designed as a single profile with welded head plate.

All the wall and support brackets for cable ladders and cable trays are 50 mm longer than the width of the appropriate cable ladder or cable tray.



St Steel

FT Hot-dip galvanised

Master data

Item number	6910011
Type	OL254 450 HDG
Description 1	Support bracket
Description 2	OL254 single
Manufacturer	O-line
Dimension	460x120x45
Material	Steel
Surface	Hot-dip galvanised
Surface standard	DIN EN ISO 1461
Smallest sales unit	1
Unit of quantity	Piece
Weight	150.8 kg
Weight unit	kg/100 pc.

Dimensions

Length	450 mm
Width	50 mm
Height	160 mm
Dimension A	450 mm